

Medisoft v15 Service Pack 2 Install

Introduction

The Medisoft v15 Service Pack 2 (SP2) release is now Generally Available and can be downloaded. Please see **V15 SP2 Installation Instructions** in this article.

- Refer to the “Release Notes” in the Attachments pane of this article for items addressed in M V15 SP2. The pane is located on the right side of the screen. If the pane is not showing, click **Show Info**.
- See “Additional V15 SP2 Installs” at the end of this article for information on Medisoft v15 SP2 Office Hours Professional (refer to article number [133994](#)) and Medisoft v15 SP2 Reports Professional (refer to article number [133995](#)).

IMPORTANT ITEMS BELOW!

Prior to installing Medisoft V15 Service Pack 2, please read the following items below:

- The EDI module and the Service Pack must be installed on each workstation. If you do not update each workstation, you risk data corruption.
- A Service Pack must be installed on each workstation—including servers.
- Upon completion of this Service Pack Installation, download the latest V15 EDI Module, 15.4.9.13. Please refer to KB article number [132715](#) for instructions.

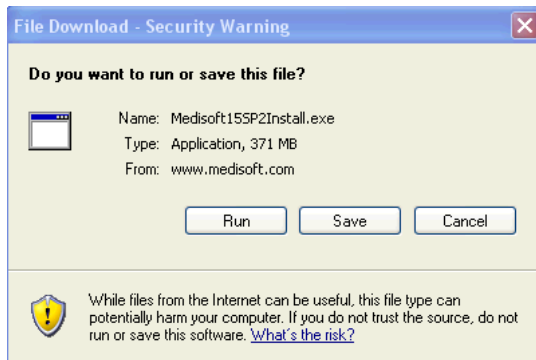
V15 SP2 Installation Instructions

Installation Synopsis before Installation: a) make a backup of the practice files, b) ensure all users are out of Medisoft, c) close all programs, d) install Medisoft 15 SP2.

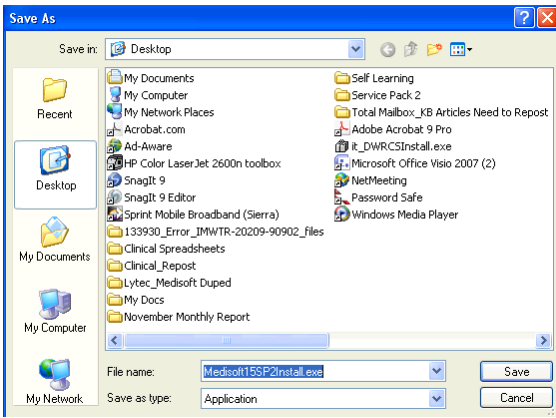
1. Click the following link to download **Medisoft 15 Service Pack 2**:

www.medisoft.com/download/V15/Medisoft15SP2Install.exe

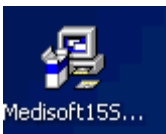
2. When the **File Download** window opens, click **Save**.



3. From the **Save As** window, select **Desktop** and click **Save**.

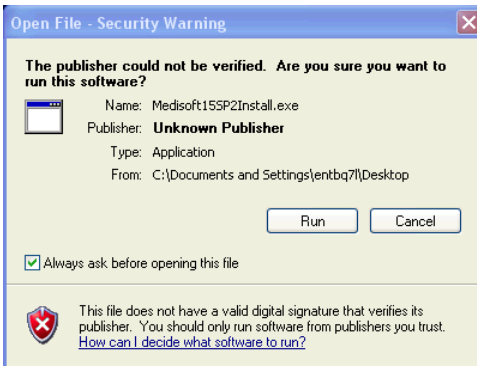


4. Once the service pack download completes, double-click on the **Medi15SPInstall.exe** icon.



5. Click **Run** in the **Open File – Security Warning** window.

Note: Depending on security settings, the Open File - Security Warning window may appear. Click **Run**.

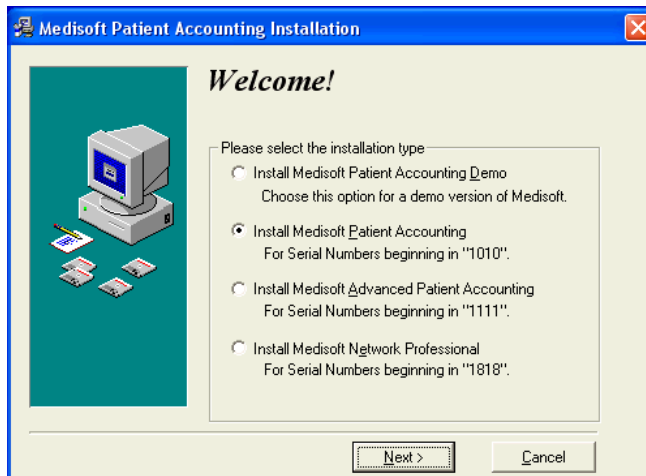


6. Close all other open applications and then click **Next** in the **Warning** window.

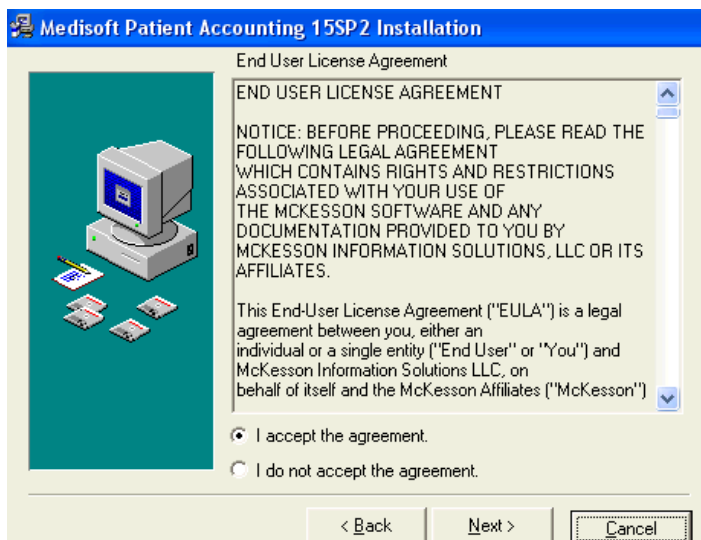


7. Select the version of Medisoft (based on the **first four serial numbers** on the Medisoft CD case. Click **Next**.

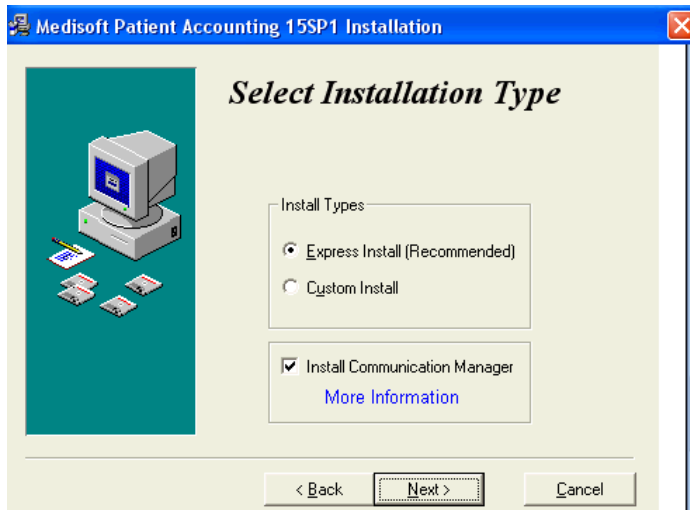
Note: Do not select Install Medisoft Patient Accounting Demo. The following example uses "Install Medisoft Patient Accounting For Serial Numbers beginning in 1010"..



8. Click **I Accept** in the **Software License Agreement** window.



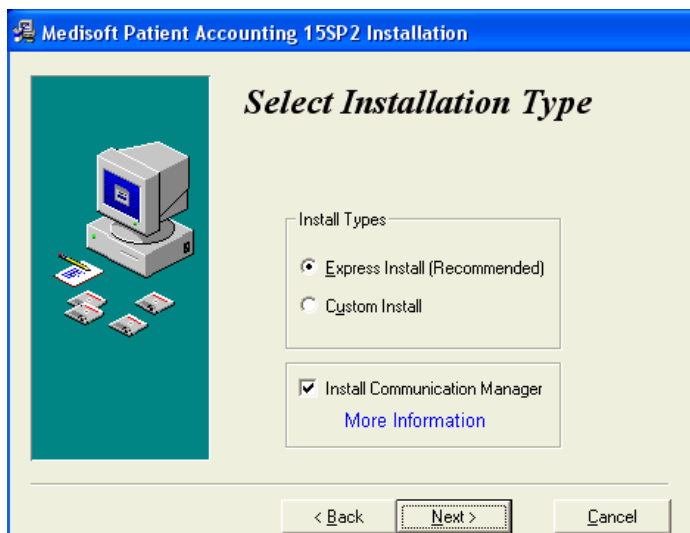
9. Leave the default settings in the **Select Installation Type** window and click **Next**.



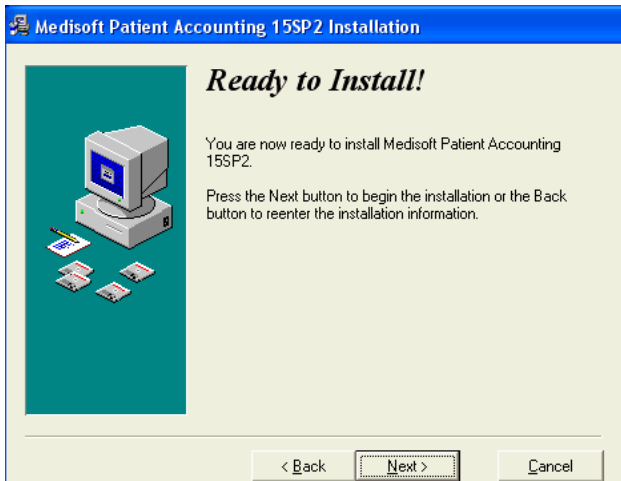
10. Click **Next** in the Subscription Agreement window.



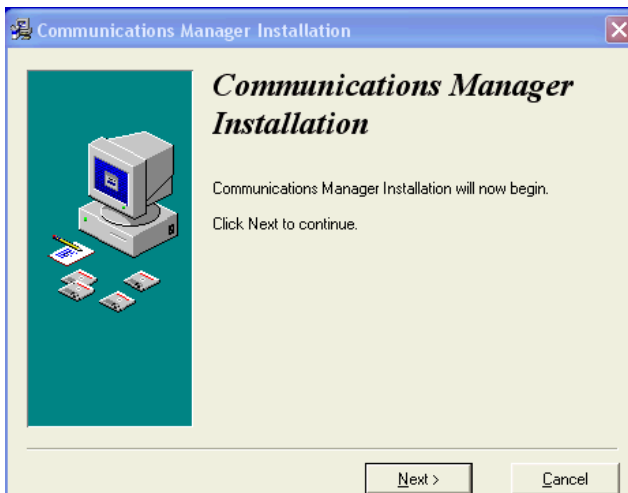
11. Leave the default settings in the **Select Installation Type** window and click **Next**.



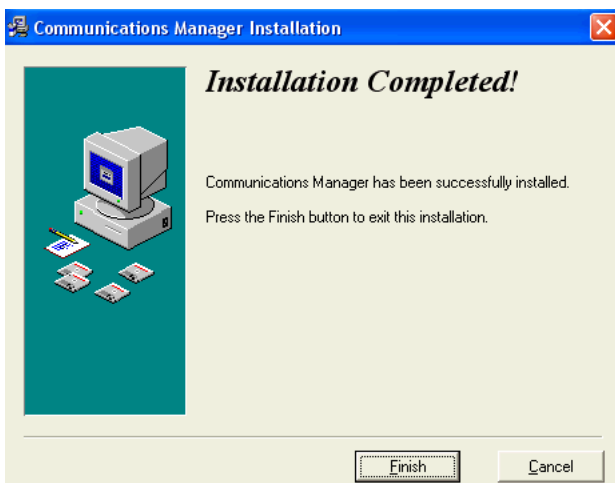
12. Click **Next** in the **Ready to Install** window.



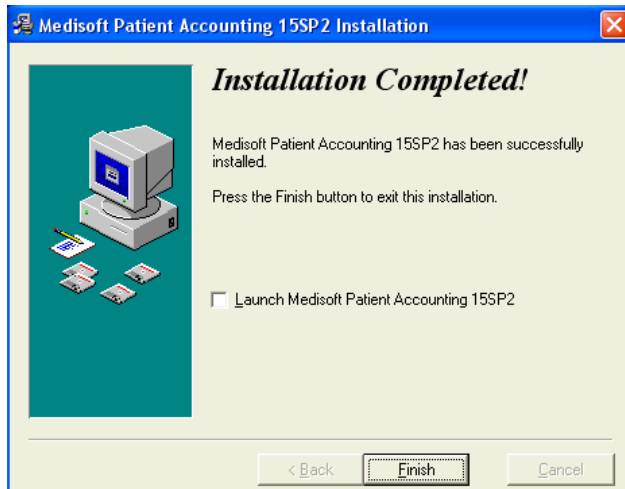
13. When the **Communications Manager Installation** window appears, click **Next**.



14. When the **Communications Manager Installation Completed** window opens, click **Finish**



15. When the **Installation Completed** window opens, click **Finish**.



Release Notes for Medisoft V15 SP2

Please refer to the Release Notes in the attachment pane for the issues addressed in SP2. If the pane is not showing, click **Show Info**.

Additional V15 SP2 Installs

- *Medisoft v15 SP2 Office Hours Professional*
 - www.medisoft.com/download/V15/OHPV15SP2Install.exe
 - Go to article number **133994** for install instructions

- *Medisoft v15 SP2 Reports Professional*
 - www.medisoft.com/download/V15/RPTProV15SP2Install.exe
 - Go to article number **133995** for install instructions